



International Dynetics Container Packers

520 SERIES



520A

*Photos may contain optional equipment



520T5



520SS

Model 520A

The original. This full-size, solid body trash compactor is equipped with a 5 HP power unit for high volume applications.

Model 520ESII

Full-size, solid body trash compactor, provides an economical solution with a 1 HP power unit for smaller buildings.

Model 520T5

Short bodied trash compactor capable of displacing up to 65 yd³/hr. Removable hopper allows for a variety of options.

Model 520T1

Similar to the 520T5, except it is equipped with a 1 HP power unit. Capable of displacing up to 24 yd³/hr.

Model 520SS

Specially designed to fit into very small trash rooms where the shortest container packer is required.

The IDC 520 Series are fully automatic, hydraulically operated trash compactors capable of displacing up to 65 cubic yards per hour. With multiple sizes, fixtures, and options, you will find an IDC 520 machine available for any trash room.

A photo-electronic sensor starts the compaction cycle when refuse enters the hopper and turns the machine off when the hopper is empty. The trash compactor automatically shuts off if an uncrushable object is encountered. An unload light is provided to signal a full container. A service access door is provided in the hopper, equipped with an electronically interlocked safety switch which prevents the machine from operating if the access door is open. An emergency stop button is provided for safety.

Compactors are compatible with various front and rear load compaction container sizes.



635 Hay Street, York, PA 17403

precisionmachinerysystems.com

717-846-6800 | info@PrecisionMachinerySystems.com



520 Series Specifications

	520A	520 ESII	520SS	520T1	520T5
Chamber Capacity	6.5 cf	6.5 cf	N/A	8.0 cf	8.0 cf
Compaction Force (M)	15,075 lbs	10,360 lbs	13,815 lbs	7,850 lbs	19,625 lbs
Top Opening Throat	24" L x 26" W	24" L x 26" W	23" L x 30" W	22" L x 30" W	26" L x 30" W
Ram Face Pressure (M)	32.8 psi	22.60 psi	14.5 psi	14.5 psi	36.3 psi
Volume Displacement	54.0 cy/hr	19.0 cy/hr	N/A	24.0 cy/hr	65.0 cy/hr
Cycle Time	16 seconds	44 seconds	60 seconds	57 seconds	17 seconds
Size, without container (L x W x H)	66 x 38 x 67 in	66 x 38 x 67 in	51 x 38 x 75 in	50 x 40 x 68 in	50 x 44 x 68 in
Weight, without container	1,650 lbs	1,500 lbs	950 lbs	1,450 lbs	1,550 lbs
Motor Horsepower	5 HP	1 HP	1 HP	1 HP	5 HP
Motor Voltage	208/230/460 V, 3Ph, 4 Wire	115/208/230 V, 1Ph	115/208/230 V, 1Ph	115/208/230 V, 1Ph	208/230/460 V, 3Ph, 4 Wire
Motor Full Load Amps (FLA)	14.9-13.4/6.7 A	14.0/7.1/7.0 A	14.0/7.1/7.0 A	14.0/7.1/7.0 A	14.9-13.4/6.7 A
Hydraulic Pump	1-Stage, 6 gpm	1-Stage, 2.4 gpm	1 Stage, 2.4gpm	1-Stage, 2.4 gpm	1-Stage, 6 gpm
Cylinder Bore Diameter	3"	3"	4"	(2) 2.5"	(2) 2.5"
Control System, Fused, AC	115V	115V	115V	115V	115V

Standard 520 Series Options

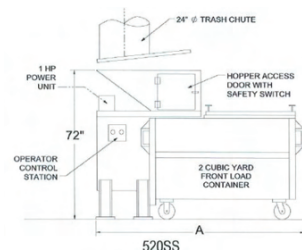
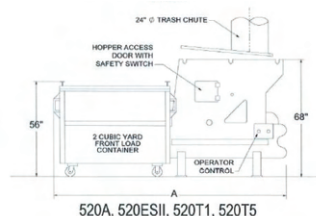
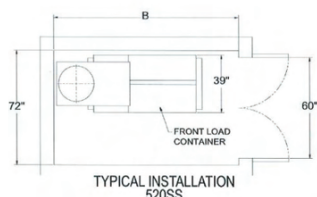
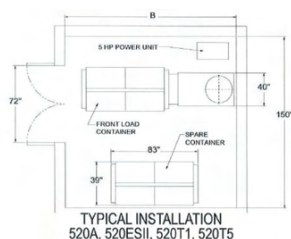
- *Hopper Flare & Extensions
- *One-Side Container Attachment
- *Dual Sided Handling
- *Heavy Duty Options
- *PLC Package
- *UL Labeled Control Panel Package
- *ANSI Z245.2-2008 Package
- *Excessive Run Timer
- *Keyed on/off Switch
- *Control Transformer
- *Deodorizer
- *Sound Dampening

*Additional options/customizations available upon request

520 Series Dimensions

	520A	520 ESII	520SS	520T1	520T5
Dim "A" – Machine Length with Front Load Container	142"*	142"*	102"*	125"*	125"*
Dim "B" – Room Length Minimum with Front Load Container	154"*	154"*	114"*	137"*	137"*

*Note: For Rear Load Containers, Subtract 7"



Due to continual product improvement PRECISION MACHINERY SYSTEMS reserves the right to change specifications without notice. The information and pictures used in the document are for illustrative purposes only.



635 Hay Street, York, PA 17403

precisionmachinerysystems.com

717-846-6800 | info@PrecisionMachinerySystems.com

